

GEONFINO

G2 

GATEWAY

User Manual

GATEWAY G2

Model :	G2
Dimensions :	2.76X2.76X1.02 inches
Network :	WiFi 2.4G
IEEE standard :	802.11 b/g/n
Power interface :	Type-C USB
Power input :	5V/500mA

Light Status



When the Gateway is powered on:

- ● Flashing Red/Blue lights:
Stand-by mode - Ready to Pair
- Blue light: Normal mode
- Red light: Network failure

Pair the Gateway with TTLock APP

1 Open the TTLock APP



2 Touch the "☰" icon on the top left of the screen



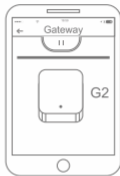
3 Select [Gateway]



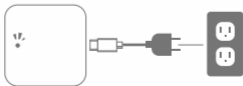
- 4 Press "+" in the upper right corner



- 5 Select [**G2**]



- 6 Plug in the Gateway and power it on.



- 7 While the light is flashing alternately in red and blue, press "+" sign



- 9 Select the network and input your WiFi password

- 8 Add Gateway



⚠ Notice: If the above process times out, please power off and try again.

GEONFINO

G2[📶]
GATEWAY

Pair your Alexa



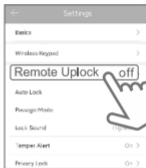
Ensure that the TTLOCK account is paired to the lock and gateway

Enable remote unlock function in TTlock before you use the voice control.

1 Select the "Setting" option.



2 Select the "Remote Uplock" option.



3 Click the "Turn on".



Login Alexa app

Input the Amazon account and password to login Alexa app



Add TTLOCK skill

1 Press the "more" sign



2 Select "Skill & Games" option



- 3 Press the "🔍" sign and input "TTLOCK" in the search bar.



- 4 Click the "ENABLE TO USE". Input TTLOCK account and password to finish the authorization.



Pair your Alexa

- 1 Click on the "DISCOVER DEVICES" option.



- 2 Click the "+" icon in the upper right corner.



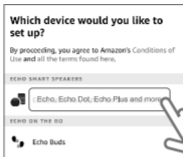
- 3 Select the "Add Device".



- 4 Select the "Amazon Echo".



- 5 Select the "Echo, Echo Dot, Echo Plus and more".



- 6 Press and hold round button of Alexa until the orange light appears, select your wifi network and connect it.





Searching for device...

Make sure your device is nearby, plugged in and in Setup mode.

Searching for Wi-Fi

Make sure device is nearby, plugged in and in Pairing mode.

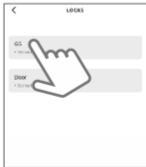
Connecting to your saved Wi-Fi TP-LINK_1423

Make sure your device is nearby, plugged in and in Pairing mode.



Your Echo Dot is now connected.

7 Press locks option, choose the lock you paired.



8

Open the icon in the upper right corner and slide the next icon button to keep unlock by voice.



Open "Unlock by App"



Open "Unlock by voice"

9

Create your voice code.



Create your voice code



Open "Enabled"

GEONFINO

G2 

GATEWAY

Pair your Google Home app



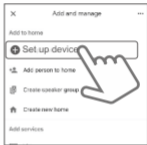
Ensure you have download both the Google Home app and the TTLock app.

Configure your lock onto the Google Home app

- 1 In the Google Home app, click the "+" in the top left corner.



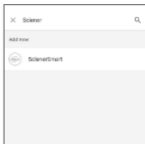
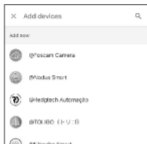
- 2 Then click the blue "+" that is titled "Set Up Device".



- 3 Click the second option that says "Works with Google".



- 4 Then search "Scierer" in the search bar to link the device to your Google Home.



- 5 Log in to Scierer using the same credentials you use to sign into your TTLock account.



Ensure that the gateway is connected to the same network.

- 6 Once Sciener is connected any smart locks connected to the Gateway should become available and connected.



- 7 Lastly, to enable remote unlock from Google Assistant head to TTLOCK app.
- 8 On the front page click the menu to the left had side.
- 9 Click the last option "Work With".
- 10 Then select Google.
- 11 Click "turn on" and enter a passcode you will remember.

GEONFINO

Dear customer,

Greetings!

Thank you very much for your purchasing! We are so honored to have you as our customer, and we have great confidence to provide you with premium products and friendly service.

About GEONFINO

As an innovative and high technology corporation, GEONFINO is dedicated to R&D, designing, producing and marketing of Smart lock products. Our top-guns in the Smart lock field have constantly developed a series of products with features like fashion, human care, energy efficiency, and environment protection. And we highly value concepts of "People Oriented, Practical and Innovative." a professional seller in the smart lock field will always be a nice company to your life!

Warranty

GEONFINO not only provides a 1-year warranty for all our products but also offers high-level after-sales service. Please

kindly contact us immediately and we will supply a replacement or refund if you encounter any of the followings:

- 1.Receiving defective items;
- 2.Short packaging;
- 3.Parts are broken in transit;
- 4.Item stops working within warranty;
- 5.Wrong order.

Importance

Valuable Customers, if you like our products and service, please share your wonderful experience with us and other customers, we will be very grateful. If you're dissatisfied with what you get, before writing negative feedback, please contact us, we will try our best to solve the issue to your satisfaction. Thanks for your vote of confidence again! Wish you a very happy life!

Best regards!

Customer Service E-mail:geonfino@afterservice.vip

Scan here to contact us
[24Hrs Online]



<https://geonfino.afterservice.vip>