

Installation Instructions

Dear customer, to ensure that you can install the lock more quickly, we provide you with **some important steps** for installation. If you have any questions when installing the lock, please refer to the user instruction as below. Thank you for your cooperation! But if the problems remain, please don't hesitate to contact Geonfino Customer Service by email:geonfino@afterservice.vip

- 1 Turn to page 2, when installing the latch, please pay attention to keeping "UP" at the top as the figure shows.

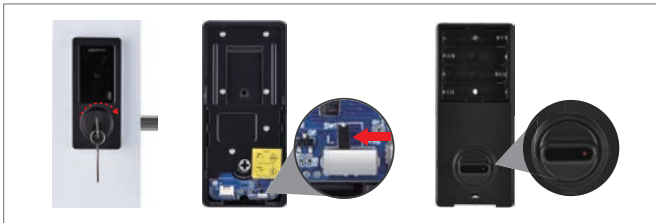


- 2 Turn to page 8, how to distinguish the left and right direction of the door?

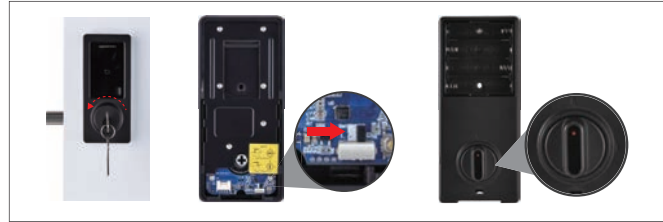
IMPORTANT:

Please face the smart lock display directly and twist the key.

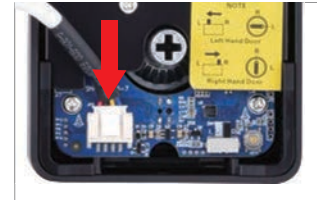
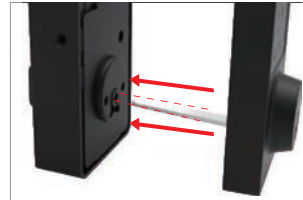
[Left Hand Door]: If the lock is turned to the right and the door is closed, then your door is a "Left Hand Door". Please pull the small switch to the **L** position as the arrow points.



[Right Hand Door]: If the lock is turned to the left and the door is closed, your door is a "Right Hand Door". Please pull the small switch to the **R** position as the arrow points.



- 3 Turn to page 9, please keep the tail bar in the horizontal direction. The plug of the power cord should be aligned with the groove and inserted into the hole in the vertical direction, as the figure shows below.



- 4 Turn to page 10, before installing the interior assembly and mounting plate, please use a tool to insert the extra cable into the hole to ensure that the interior assembly and mounting plate can be fully fitted.

